



Annual General Meeting (by ZOOM)
Period 1 April 2019 to 31 March 2020

P.A.C.E CANADA
Project for the Advancement of Childhood Education
HELPING YOUNG CHILDREN SUCCEED

AGENDA

1. Welcome
2. Minutes AGM 28 May 2019
3. President's Report
4. Financials
5. Adopt-A-School Report
6. New Model School Program
7. Education & Wellness
8. Communications
9. Election Slate of Officers
10. 2020-2021 Priorities
11. Thank You
12. Q&A

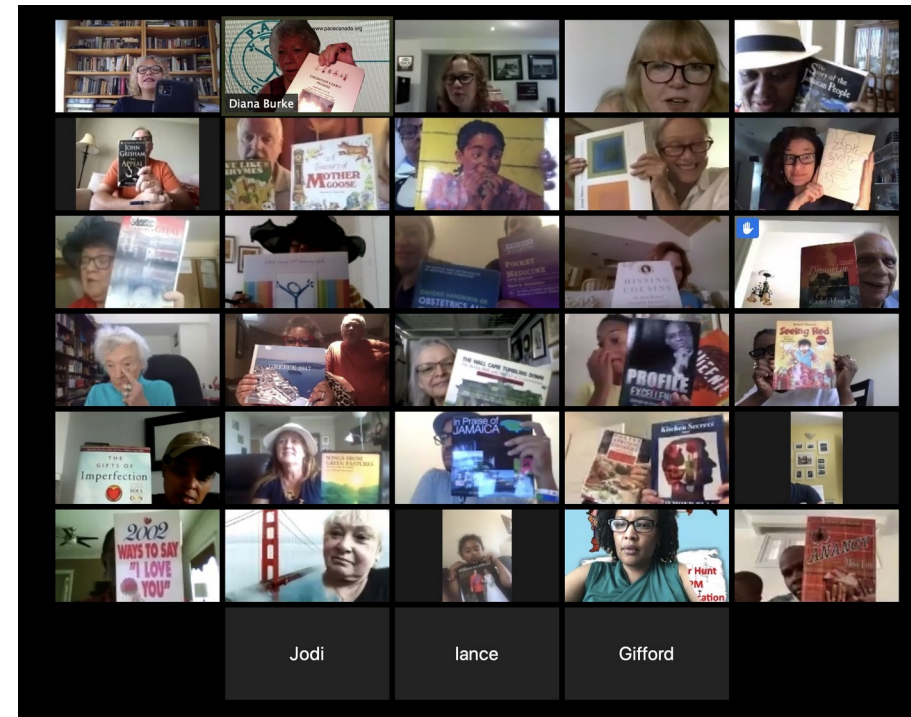
Minutes of AGM 28 May 2019

- ▶ Bylaw Article 6.3 Revision approved - The maximum Term of a Director can not exceed (four 4) 2 year terms.
- ▶ 2018-2019 Financials approved
- ▶ 2019-2020 Slate of Officers & Directors approved

RESOLUTION 1: IT IS RESOLVED THAT the Minutes of the PACE Canada AGM meeting held on 28 May 2019 be approved

President's Report

- ▶ Strategic Plan held Sept. 2019
- ▶ Community events
- ▶ Partnerships
- ▶ COVID-19 Impact



ZOOM Moments 2020

President's Report

Strategic Plan 2019-2022

Board, Patrons, GBC and Consulate attendees

Key actions:

- Model School crowd funding
- ✓ Outreach to younger members to increase members
- ✓ Increased Partnership with Jamaican diaspora
- ✓ Brand Ambassador

Community events

August 25th – Farewell to Hon. Edward Seaga

- November 8th – George Brown College – Jammin to Jamaica
- December 7th – Presidents Holiday Reception
- December 10th – Nelson Mandela Public School JK – Gift Box Presentation
- February 17th – farewell to HC Miller and CG Wilks
- March 6th – 1st Friday presentation
-



Hon. Seaga Tribute 2019

President's Report

► Partnerships

- Oct 17th - Jamaica ECC visit – Mrs. Norda Seymour Hall, Director
- April 2020- partnership with Central Jamaica Conference (<http://www.centralja.org/>) who sponsors 20 Basic schools
- JN Bank partnership – office space, Bank account in Jamaica (pending)

► COVID-19 Impact

- Strawberry Social cancelled – loss of Operating income
- Board meetings online on Zoom

Financials

► General Fund

- Total Revenues include General, Membership Fees and Fundraising. Total Revenues decreased by \$40,837 (46.5%) mostly due to significant decrease in Donations – General. In the prior year the Fund received a special donation of of \$35,000.
- Total Expenses decreased by \$24,725 (37.4%) mainly due to decrease in Donations to Basic School Improvement Fund (\$5,487)Accounting and Admin fees (\$4,795); Web Maintenance expenses (\$3,856) and Fundraising Expenses (\$9,316).

► Restricted Fund

- Total Revenue includes AAS (\$51,017); Model School Program (\$1,960) and Gift Box (\$4,464) The reduction in Restricted Funds are due to changes in contribution levels which we assume is COVID-19 related.

| | General Fund | | Restricted Fund | |
|---|--------------|----------|-----------------|----------|
| | 2020 | 2019 | 2020 | 2019 |
| Total Revenue | \$46,956 | \$87,793 | \$57,442 | \$65,363 |
| Total Expenses | \$41,381 | \$66,106 | \$28,644 | \$26,656 |
| Excess of Revenue over Expenditure | \$5,575 | \$21,687 | \$28,798 | \$38,707 |
| Net Assets | \$6,021 | \$10,713 | \$29,893 | \$42,838 |

Financials

RESOLUTION 2: IT IS RESOLVED THAT the 2019-2020 Financial Reports presented at the PACE Canada members at the AGM meeting held on July 21,2020 be approved .

Adopt-A-School

- ▶ **2019-2020 Disbursements:**
 - ▶ Fall 2019 - \$45,026 to 96 schools
 - ▶ Spring 2020 - \$36,264 to 69 schools*
 - ▶ **Total - \$81,390 to 165 schools**

- ▶ **Gift Boxes** \$6,000 to 55 schools



*Spring distribution sent in April 2020 via wire transfer to the ECC due to COVID-19

Adopt-A-School

► New schools Adopted (11):

- ABOUKIR INFANT SCHOOL, St. Ann
- ALVA PRIMARY & INFANT SCHOOL, St. Ann
- ARGYLE MOUNTAIN BASIC SCHOOL, Westmoreland
- BROWNSVILLE ALL-AGE & INFANT SCHOOL, Hanover
- CASTEL MOUNTAIN BASIC, Westmoreland
- FREE HILL PRIMARY & INFANT SCHOOL,
- JOSEPHINE GLASSPOLE BASIC,
- MANSFIELD HEIGHTS BASIC, St. Ann
- MAVIS ALLEN ECEC, St. James
- SEAFORD TOWN ECI, Westmoreland
- STOCKHOLM PARK BASIC SCHOOL, St. Mary



Learning Mathematics

PACE new Model School Program....

- ▶ To fast track school's certification
- ▶ Using a 'crowdfunding' model for funding
- ▶ Reach out to community and wider constituents
- ▶ Focus on 2 needy schools to get to certification status
 - ▶ Dunrobin ECI and End Time Basic, Kingston
- ▶ Success will ensure roll out to more schools



Education & Wellness

- ▶ In Partnership with George Brown College, The Early Childhood Commission and the University of West Indies we presented a number of workshops at conferences in Montego Bay and Kingston.
- ▶ The focus was on Children's Education and Wellness and topics included:
 - ❖ How to incorporate your environment to meet the children's needs as use it as your third teacher
 - ❖ How to include play as a teaching tool
 - ❖ How to plan curriculum that includes loose parts
- ▶ We had over 650 participants in attendance which included Practitioners, Principals, Developmental Officers and other stakeholders

Education & Wellness

- ▶ We also presented in Toronto at the School Age Conference hosted by George Brown College. During this conference we had PACE flyers available and discussed our partnership with the many stakeholders in Toronto and Jamaica.



Model School – Dunrobin ECI

Communications

➤ **MiCharity**

- Initially was a Donation platform with separate modules for outbound email and event ticketing.
- Platform has evolved to includes all modules as a single offering
- We are on track to launch the “One donation. Multiple Campaigns.” in June which will enable a single payment for AAS, Membership, School Supplies

➤ **Model School Launch – November 2019**

➤ **Website updates**

➤ **Social Media**

- We continue to use Facebook, Instagram, Twitter and WhatsApp
- We will be evaluating the use of paid promotions during 2020

Communications

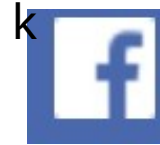
- ▶ Join our PACE social media and get ongoing updates
 - ▶ Links at www.pacecanada.org/modelschool
- ▶ Spread the word – widen our circle of PACE supporters
- ▶ Donate to this program (Online or Cheque)
- ▶ Attend our events

Twitter



[@PACECanadaOrg](https://twitter.com/PACECanadaOrg)

Facebook



[@pacecanada.org](https://www.facebook.com/pacecanada.org)

Instagram

[@pacecanada](https://www.instagram.com/pacecanada)

WhatsApp



PACE Model School News group

Election of Slate of Officers

| ➤ Incumbents | Term Exp. | ➤ Nominees | Term Exp. |
|---------------------------------------|-----------|-------------------------------------|-----------|
| • President – Diana Burke | 2021 | • Co-Chair – Education & Wellness | 2022 |
| • Treasurer – Michelle Gregory-Thomas | 2021 | – Marcia Anderson | |
| • Secretary – Maxine Bailey | 2022 | • Chair Membership – Melissa Baxter | 2022 |
| • Chair AAS - Mardi South | 2021 | • Director – Angela Dabideen | 2022 |
| • Chair – Education & Wellness | 2022 | • Director - Angella (Opal) Fuller | 2022 |
| – Colette Kane | | • Director- Dr. Edith Lorimer | 2022 |
| • Chair – | | | |
| • Communications – Mark Fullerton | 2022 | | |
| • Director – Gail Hunter | 2021 | | |

Nominations Committee Members: Dr. Mavis Burke, Founder; Mrs. Kamala-Jean Gopie, Patron; Lorna King, Patron; Diana Burke, President

Election of Slate of Officers

- **RESOLUTION 3:** IT IS RESOLVED THAT the 2020-2021 slate of the Board Officers and Directors be approved as presented.

2020-2021 Priorities

- ▶ Focus on 2020-2022 Strategic Plan Objectives
 - ▶ Increased Membership of 35-50 year olds
 - ▶ Model School crowdsourcing
 - ▶ Partnerships
- ▶ Communications – more frequent to members
- ▶ Adopt-A-School continued support
 - ▶ Including ECC covid-19 requirements

2020-2021 Priorities

▶ ECC COVID-19 School Updates

- ▶ The Early Childhood Commission has provided the following list of needs each school must comply with to open in September 2020.

An appeal to PACE for donations to assist with these supplies estimated at \$ 1,500 per school.

- | | |
|------------------------------|----------------------------------|
| ▶ Thermometers | - \$128 each |
| ▶ Face Masks | - \$25 pack of 50 (3 per school) |
| ▶ Sanitizer dispensers | - \$150 each (3 per school) |
| ▶ Social distance markers | - \$100 per school |
| ▶ Portable hand washing sink | - \$25 each(2 per school) |
| ▶ Soap and sanitizers | - \$ 30 per school |
| ▶ Hand towels | - \$25 per case of 12 |

Thank you

- **Patrons, Life members, members and our Board**
 - Your donations and support to assist with Operating Funding
 - Continued support of AAS Program to ensure PACE success
 - Retiring Board and Directors members Nicole Perryman, Maxine MacDonald, Karen Donaldson, Patricia Gloudon
- **Supporters, partners and donors**
- **New Patrons** – Lorna King and Delores Lawrence

Q & A



1390 Eglinton Avenue West
Toronto ON M6C 2E4
Canada

Ph. 647-352-7223

Email: admin@pacecanada.org

THANK YOU

Diana R. Burke

president@pacanada.org

Adjournment

- ▶ Motion to Adjourn